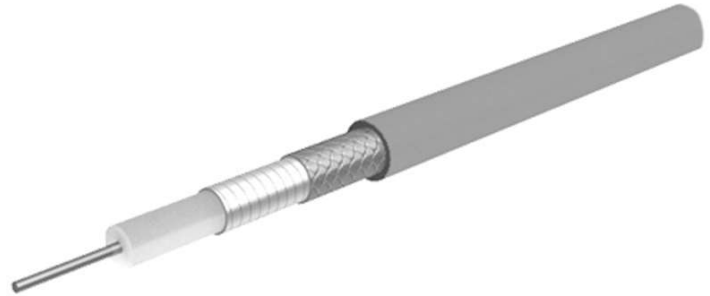


Coaxial Cable MULTIFLEX_141

苏州启道 — 中国区优势专业供应商
 sales@qiidao.com

Description

The flexible microwave cable



Technical Data

Construction

| | Material | Detail | Diameter |
|------------------|--------------------------------------|--------------------|-----------------|
| Centre conductor | Copper, Silver plated | Wire | 0.92 mm |
| Dielectric | PTFE (Polytetrafluoroethylene) | | 2.93 mm |
| Outer conductor | Copper, Silver plated | wrapped Foil, 100% | 3.21 mm |
| Outer conductor | Multi-end: Copper - Tinned | Braid, 83 % | 3.53 mm |
| Jacket | FEP (Fluorinated ethylene propylene) | RAL 5015 - bl | 4.14 mm +/- 0.1 |

Print: HUBER+SUHNER MULTIFLEX 141 (PA no.)

Electrical Data

| | |
|--------------------------------|--|
| Impedance | 50 Ω +/- 2 |
| Operating Frequency | 33 GHz |
| Capacitance | 95 pF/m |
| Velocity of signal propagation | 70.6 % |
| Signal delay | 4.7 ns/m |
| Insulation resistance | ≥ 1 x 10 ⁸ MQm |
| Min. screening effectiveness | ≥ 90 dB (up to 18 GHz) |
| Max. operating voltage | ≤ 1.9 kV _{rms} (at sea level) |
| Test voltage | 3.8 kV _{rms} (50 Hz/1 min) |

Mechanical Data

| | |
|---------------------|-------------------------------------|
| Weight | 4.5 kg/100 m |
| Min. bending radius | static 10 mm dynamic 40 mm |

Environmental Data

| | |
|-----------------------------------|---|
| Temperature range | -65 °C... +165 °C |
| Installation temperature | -20 °C... +60 °C |
| Flammability 2011/65/EU (RoHS) | IEC 60332-1, UL 1581 § 1080 (VW-1) compliant |

Additional Information

Ordering Information

Order as MULTIFLEX_141

Remarks

(For details refer to the HUBER+SUHNER RF CABLES GENERAL CATALOGUE or contact your nearest HUBER+SUHNER partner)

Suitable Connectors

Cable group Y17 3 mm / 50 Ohm

Coaxial Cable MULTIFLEX_141

苏州启道 — 中国区优势专业供应商

sales@qiidao.com

Matrix typical Attenuation [formula: $(a \cdot f^{0.5} + b \cdot f)$] and maximum Power CW [formula: $(p / f^{0.5})$]

Coefficients:

a = 0.3732

b = 0.0279

f_{max} = 33

P at 1GHz = 373

| Frequency (GHz) | Nom. attenuation (dB / m) sea level 25° C ambient temperature | Nom. attenuation (dB / ft) sea level 25° C ambient temperature | Max. CW power (watt) sea level 40° C ambient temperature |
|--------------------|---|--|--|
| 1,65 | 0,53 | 0,160 | 290 |
| 3,3 | 0,77 | 0,235 | 205 |
| 4,95 | 0,97 | 0,295 | 168 |
| 6,6 | 1,14 | 0,348 | 145 |
| 8,25 | 1,3 | 0,397 | 130 |
| 9,9 | 1,45 | 0,442 | 119 |
| 11,55 | 1,59 | 0,485 | 110 |
| 13,2 | 1,72 | 0,526 | 103 |
| 14,85 | 1,85 | 0,565 | 97 |
| 16,5 | 1,98 | 0,602 | 92 |
| 18,15 | 2,1 | 0,639 | 88 |
| 19,8 | 2,21 | 0,675 | 84 |
| 21,45 | 2,33 | 0,709 | 81 |
| 23,1 | 2,44 | 0,743 | 78 |
| 24,75 | 2,55 | 0,776 | 75 |
| 26,4 | 2,65 | 0,809 | 73 |
| 28,05 | 2,76 | 0,841 | 70 |
| 29,7 | 2,86 | 0,872 | 68 |
| 31,35 | 2,96 | 0,903 | 67 |
| 33,0 | 3,06 | 0,934 | 65 |