

# 370–371 Series

Flanged/Un-flanged Circular Waveguides

## Description

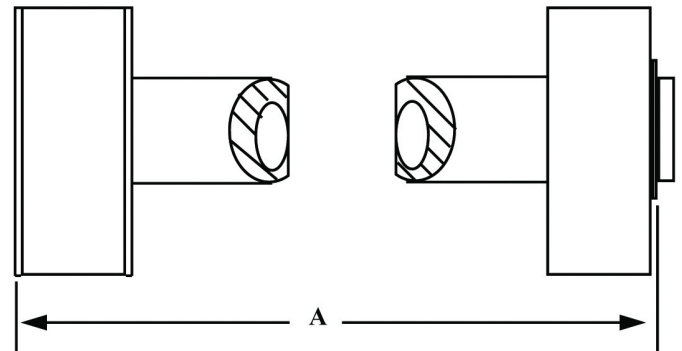
Mi-Wave's 370 Series flanged waveguide and 371 Series un-flanged waveguides are available in standard sizes from 12.6 to 320 GHz. The 370 Series waveguide sections are fitted with Mi-Wave's standard male/female flanges. Both waveguide types are manufactured primarily in copper.

- *Low VSWR*
- *Precision Size*
- *TE01 and TE11 modes available*

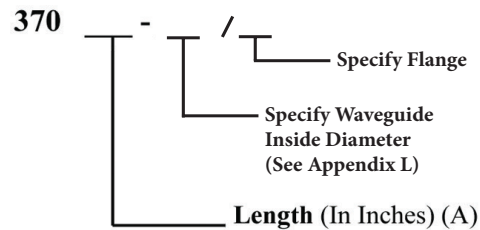
Please note: Due to the non-standardization of this product line, we recommend that you contact Mi-Wave for more specific information about your requirements.



TE01 Specifications					
Circular Waveguide			MIL-W-23068 Circular Waveguide		
I.D. O.D (inches)	Frequency (GHz)		I.D. O.D (inches)	Frequency (GHz)	Type.
1.500 X 1.750	11.6–16.0		1.500 X 1.700	11.6–16.0	WRC530D14
1.265 x 1.375	13.2–18.9		1.281 X 1.441	13.6–18.7	WRC621D14
1.106 x 1.250	15.9–21.9		1.094 X 1.224	15.9–21.9	WRC727D14
0.951 X 1.125	18.6–25.6		0.938 X 1.068	18.6–25.6	WRC849D14
0.686 X 0.750	25.3–34.9		0.797 X 0.897	21.9–30.1	WRC997D14
0.688 X 0.888	25.3–34.9		0.688 X 0.788	25.3–34.9	WRC116C14
0.634 X 0.750	27.3–38.8		0.594 X 0.674	29.3–40.4	WRC134C14
0.545 X 0.625	32.4–44.0		—	—	N/A
0.495 X 0.625	34.8–48.0		0.500 X 0.580	34.8–48.0	WRC159C14
—	—		0.438 X 0.518	39.8–54.8	WRC182C14
0.370 X 0.500	46.4–63.9		0.375 X 0.435	46.4–63.9	WRC212C14
0.353 X 0.438	50.0–68.0		0.328 X 0.388	53.1–73.1	WRC243C14
0.291 X 0.375	62.0–84.0		0.281 X 0.341	61.9–85.0	WRC283C14
0.249 X 0.313	69.7–95.9		0.250 X 0.290	69.7–95.9	WRC318C14
0.201 X 0.290	86.0–115.0		0.219 X 0.259	79.6–110.0	WRC364C14
0.186 X 0.250	93.0–128.0		0.188 X 0.228	92.9–128.0	WRC424C14
—	—		0.172 X 0.212	101.0–139.0	WRC463C14
—	—		0.141 X 0.181	124.0–171.0	WRC566C14



## Ordering Information



**FOR EXAMPLE:** Mi-Wave's model number 370-12.7-688 is a 12.7" section of circular waveguide for a frequency range of 25.3 to 34.9 GHz with an inside pipe diameter of 0.688 inches.